

Ref.	Application	PN	DN	
			3/4"	1"
<b>BH9001</b>	Compact mini trapdoor for installation of individual household mains connections in pavements, pedestrian zones and similar surfaces.	<b>16</b>	•	
				•

## Mini compact trapdoor with ball valve

### Specifications:

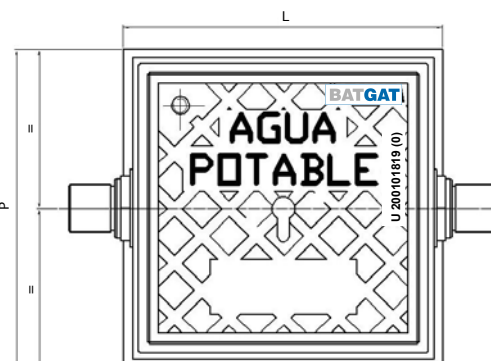
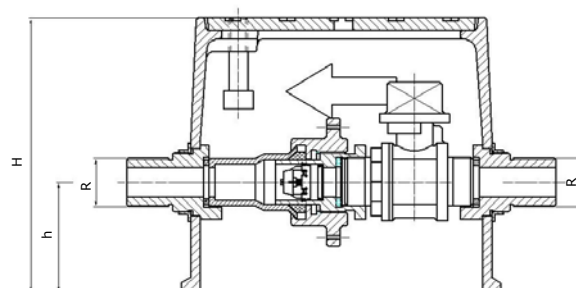
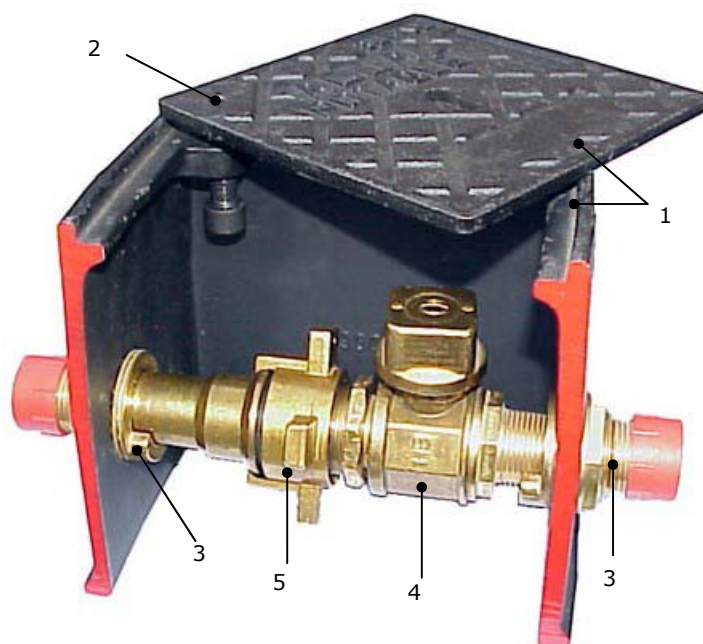
Fitted with expansion mechanisms with included check valves to prevent the return of undesired water to the water mains. For correct operation, the direction of the liquid vein must coincide with the arrow marked in relief on the sides of the manhole.

Its dimensions allow the mini trapdoor to be installed in most traditional paving slabs (20 cm x 20 cm).

The cover is secured to the manholes by a screw to prevent it from being lost. It is inscribed in relief with "FRESH WATER", together with space for customisation with a polyester plaque. There is also the possibility of customising the inscription in relief. Both options require certain minimum quantities.

- Cover and manhole** made from EN-GJS-400-15 spheroidal graphite cast iron in accordance with UNE-EN 1563:1997 with bituminous protection against corrosion.
- Safety screw**, allen DIN-ISO 898.
- Support connection**, made of CW617N brass in accordance with UNE-EN 12165. Connection thread protected with plastic plugs.
- Ball valve**, made of CW617N brass in accordance with UNE-EN 12165. With 30 cm x 30 cm lattice.
- Expansion connection** made of CW617N brass in accordance with UNE-EN 12165 with non-return valve included.

Ref. BH9001



### Accessories:

- Lattice opening spanner, 30 x 30 (Ref. BH9016).
- Opening spanner for trapdoor (Ref. BH9015).



Ref.	h (mm)	H (mm)	L (mm)	P (mm)	R	Weight (kg)
<b>BH9001</b>	60	150	174	174	3/4"	6.7
<b>BH9002</b>					1"	6.9

Ref.	Application	PN	With 1 valve	With 2 valves	DN	
					3/4"	1"
<b>BH9003</b>	Trapdoor for installation of individual household mains connections in pavements, pedestrian zones and similar surfaces with space for the location of the meter.	<b>16</b>	•		•	
			•			•
<b>BH9005</b>				•	•	
				•		•

## Trapdoors for meters with one or two valves

Meter not included

### Specifications:

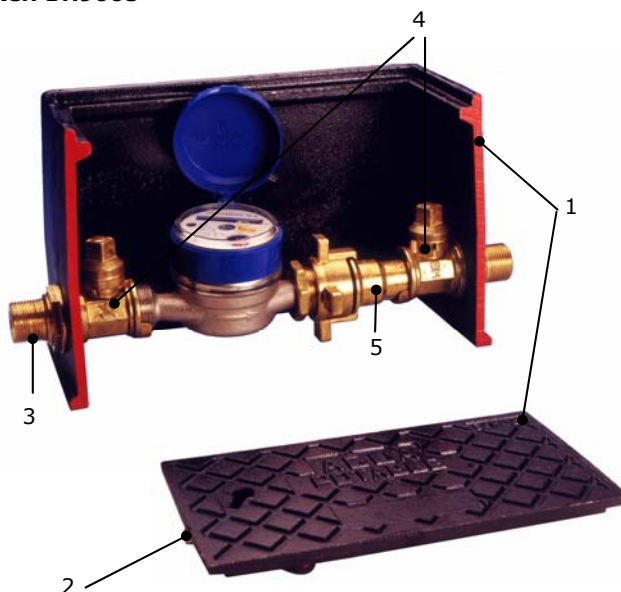
Fitted with expansion mechanism and check valve included to prevent the return of undesired water to the water mains. For correct operation, the direction of the liquid vein must coincide with the arrow marked in relief on the sides of the manhole.

The cover includes an anti-vandal lock that is operated with a special spanner (Ref.BH9015).

Cover with inscription in relief "FRESH WATER", together with water for customisation with a polyester plaque. There is also the possibility of customising the inscription in relief. Both options require certain minimum quantities.

- 1. Cover and manhole** made from EN-GJS-400-15 spheroidal graphite cast iron in accordance with UNE-EN 1563:1997 with bituminous protection against corrosion.
- 2. Locking device.**
- 3. Connector** made of CW617N brass in accordance with UNE-EN 12165. Connection thread protected with plastic plugs.
- 4. Ball valve,** made of CW617N brass in accordance with UNE-EN 12165. With 14 cm x 14 cm lattice.
- 5. Expansion mechanism** made of CW617N brass in accordance with UNE-EN 12165 with non-return valve included.

Ref. BH9005



Ref. BH9003



Close-up of the reverse side of the cover showing the anti-vandalism locking device



- Spanner-operated anti-vandalism lock (Ref. BH9015).
- Adaptable to all types of meters, including volumetric and class C.
- Meter entry and exit valves can be sealed.
- Possibility of sealing to the expansion nut blade.
- It is possible to customise the cover.

## Accessories:

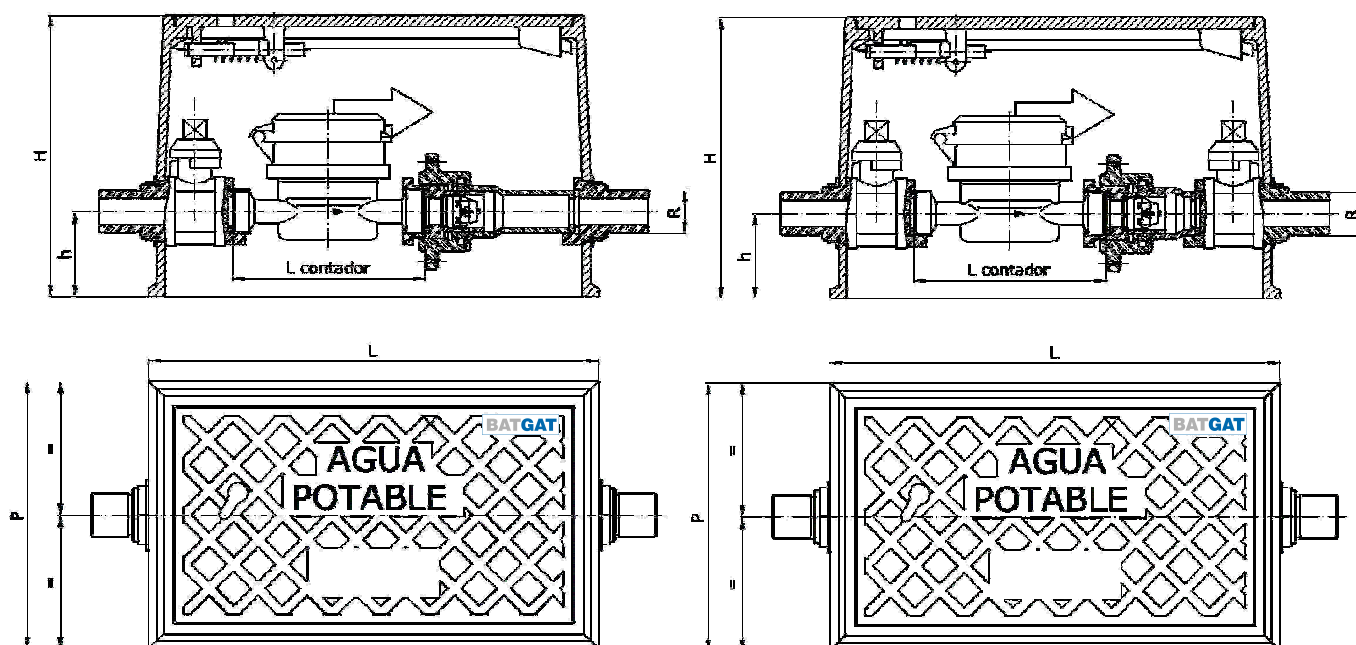
- 14 x 14 lattice opening spanner (Ref. BH9016).
- Trapdoor opening spanner (Ref. BH9015).



## TRAPDOOR TECHNICAL DRAWING

**BH9003 Single valve trapdoor**

**BH9005 Double valve trapdoor**



## Single valve trapdoor

Ref.	h (mm)	H (mm)	L (mm)	P (mm)	L meter	R	Weight (kg)
BH9003	50	170	272	162	115	3/4"	8.85
						1"	9.10

## Double valve trapdoor

Ref.	h (mm)	H (mm)	L (mm)	P (mm)	L meter	R	Weight (kg)
BH9005	50	170	272	162	115	3/4"	8.90
						1"	9.20